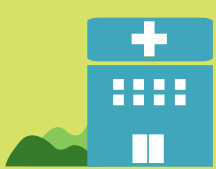


10.2 million hospitalisations

Where?

698 Public hospitals

624 Private hospitals



3 in 5 in public hospitals

5,980,000

Public hospitalisations

4,170,000

Private hospitalisations

Average length of overnight stay

Public hospitals

5.7 days

Private hospitals

5.2 days

Who?



53%

were for females



4%

were for Indigenous Australians



41%

were for people aged over 65



People living in *Very remote* areas were

1.6 times

more likely to be hospitalised

What care was provided?



1 in 4

hospitalisations involved a surgical procedure



1 in 4

were emergency admissions



131,000

hospitalisations involved a stay in intensive care units



1.4 million

hospitalisations for dialysis

← ADMISSIONS



60%

same-day hospitalisations (vs overnight hospitalisations)