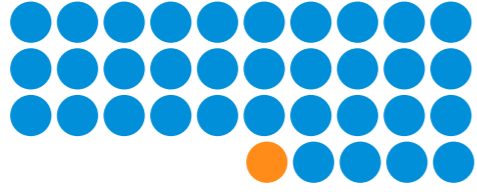


Child protection in Australia 2014–15

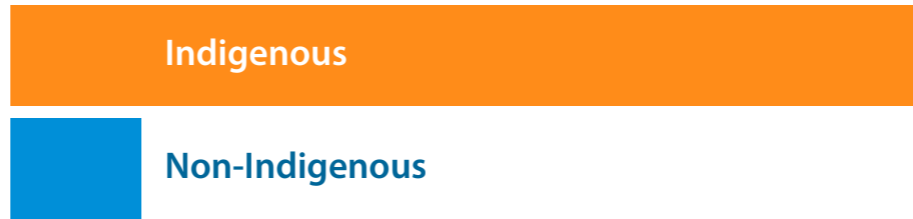
1 in 35 children received child protection services.



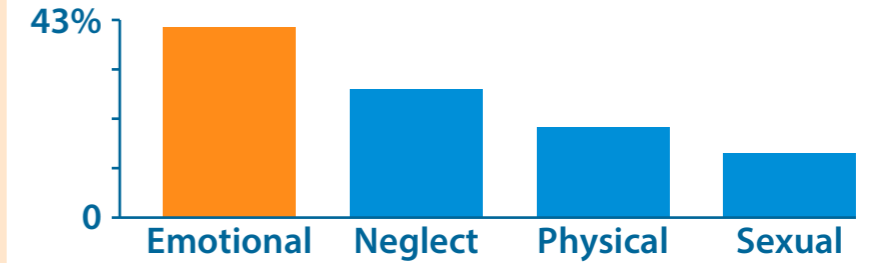
57,861 children were on care and protection orders.



Indigenous children were **7 times** as likely as non-Indigenous children to receive child protection services.



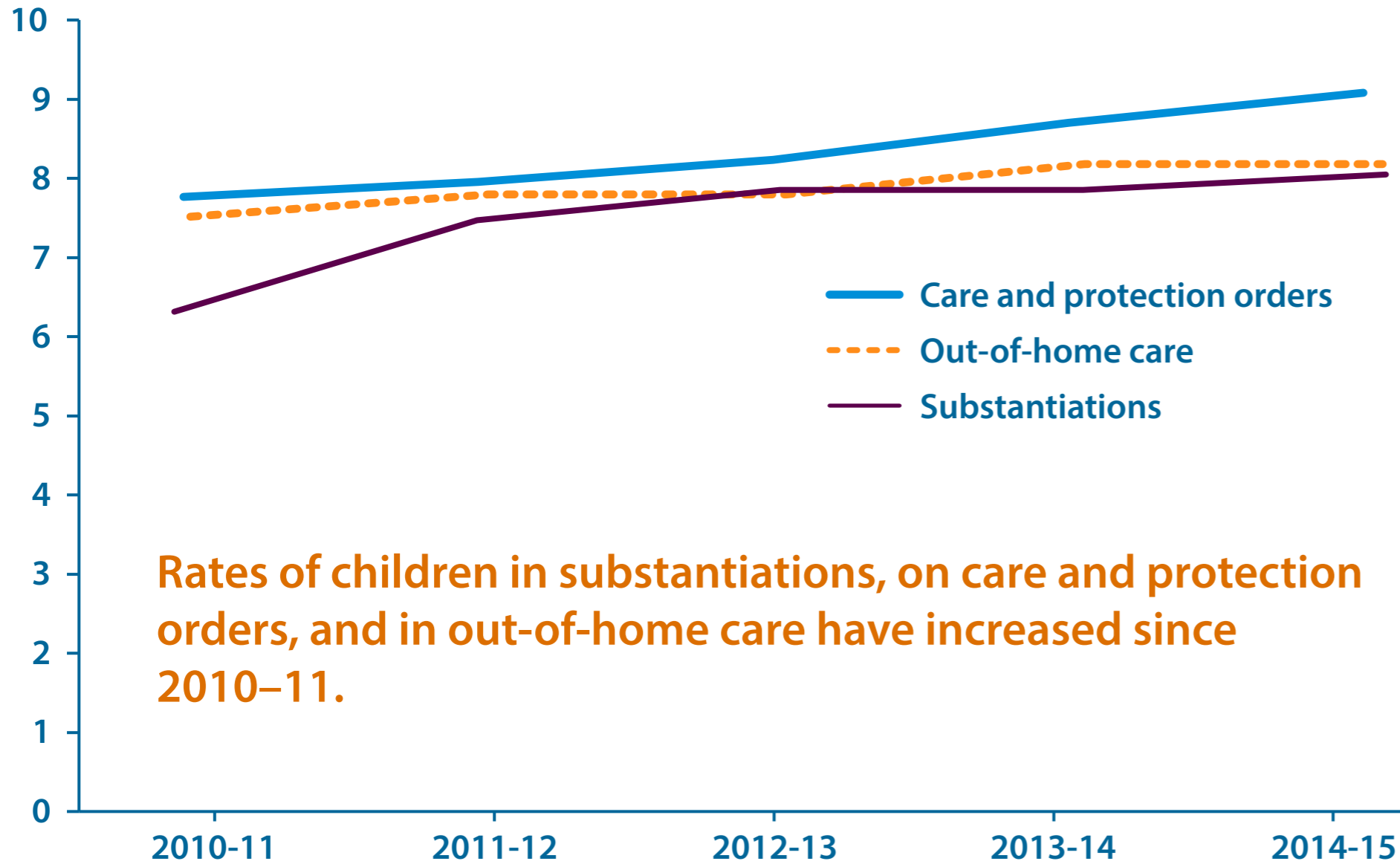
Emotional abuse was the most common type of abuse substantiated.



Children from **lower socioeconomic areas** were more likely to be the subjects of substantiation.



Rate per 1,000



Rates of children in substantiations, on care and protection orders, and in out-of-home care have increased since 2010–11.

9 in 10 children in out-of-home care were in relative/kinship care or foster care.



Half of foster care households (52%) had multiple children placed.

